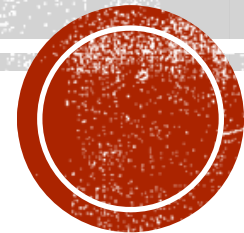


TEACHING D2L TO COLLEGE STUDENTS

ADDIE Instructional Design Plan by Tina Pineiro

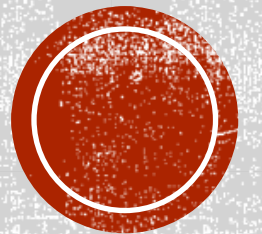


OVERVIEW

- **Problem & Needs Assessment**
- **Learner Analysis**
- **Goals & Objectives**
- **Assessment Plan**
- **Implementation**
- **Evaluation Plan**



THE ANALYSIS PHASE





- Students overwhelmed by basic D2L tasks



- Missed assignments and confusion



- No D2L student orientation



- Impacts student course success

THE PROBLEM





Reduces errors and/or missed assignments



Builds LMS confidence and reduces new student stress



Improves communication



Supports course success

WHY TRAINING IS IMPORTANT



NEEDS ASSESSMENT SUMMARY



Student surveys: navigation frustration



Instructor feedback: repeated questions



LMS analytics: low use of tools



Students want clear, hands-on explanations



LEARNER ANALYSIS

AUDIENCE: UNDERGRADUATES AND NEW STUDENTS

TECHNOLOGY EXPERIENCE VARIES

LMS EXPERIENCE INCONSISTENT

NEED SHORT VIDEOS WITH CLEAR INSTRUCTIONS



LEARNER NEEDS



Step-by-step navigation



Assignment submission guidance



Accessing grades & feedback

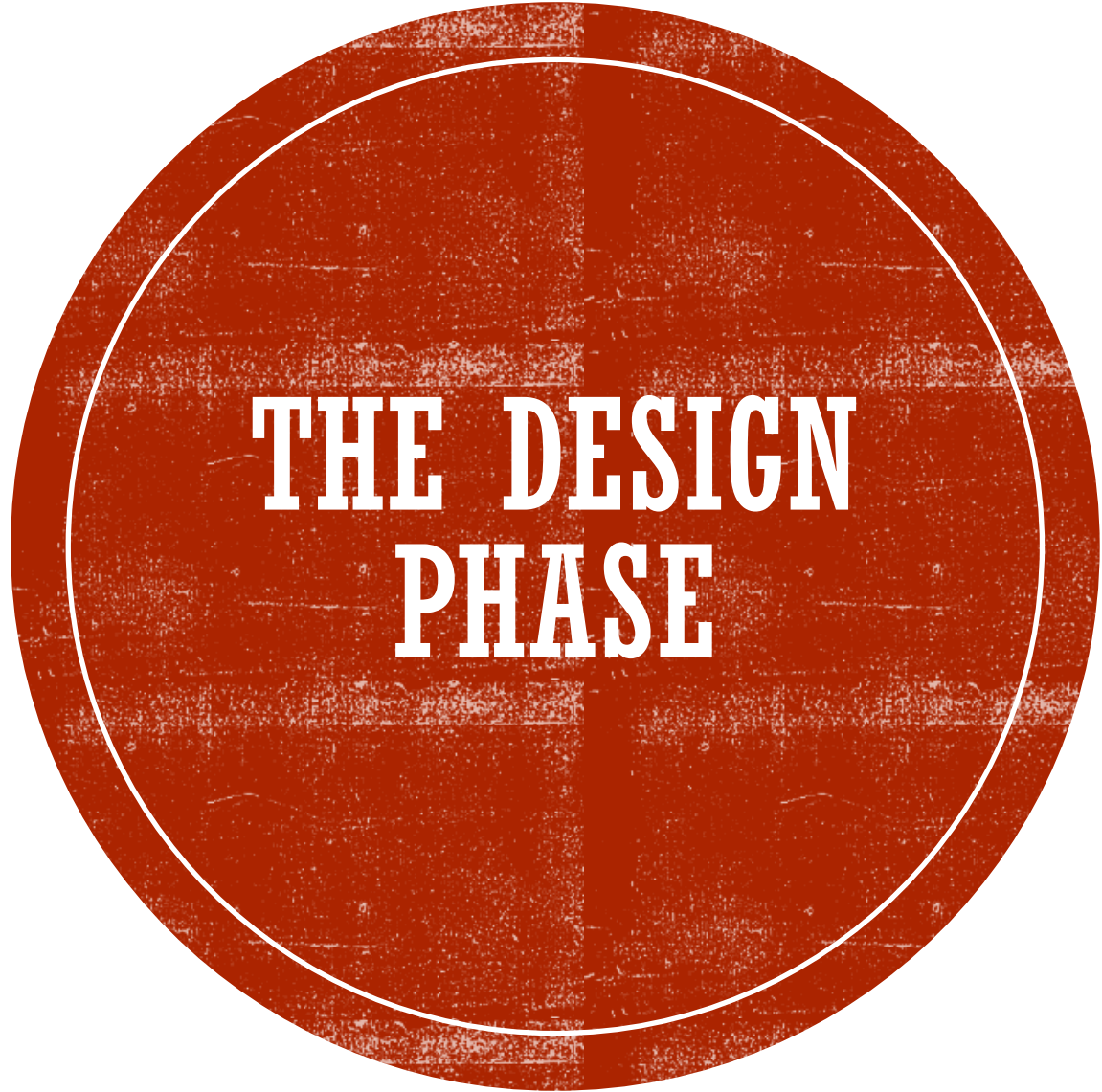


Communication tools



Notification settings





**THE DESIGN
PHASE**





OVERALL GOAL

Students will develop the knowledge and skills needed to effectively and independently engage with the D2L platform, enabling successful course participation, communication, and assignment completion.



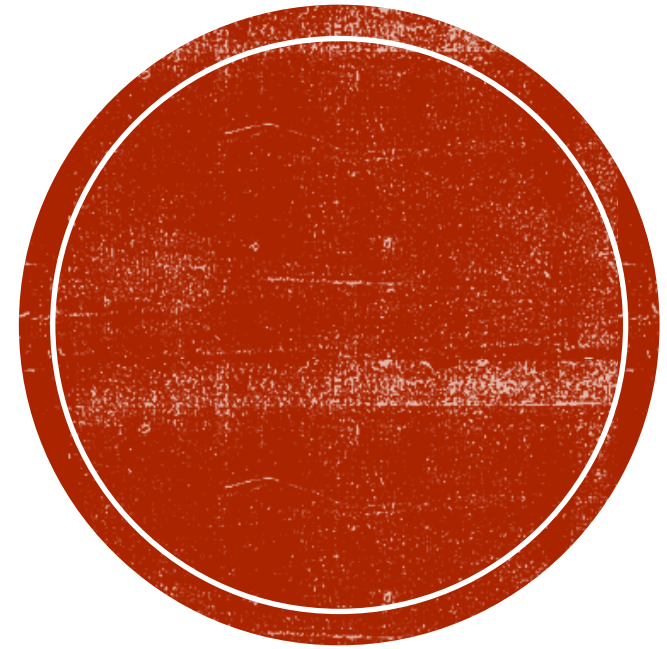


LEARNING OBJECTIVES

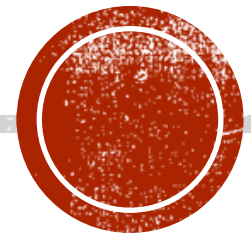
1. Navigate the D2L platform to locate course content, announcements, and key tools with 100% accuracy on a guided task checklist.
2. Submit assignments in D2L by uploading files, verifying submission, and confirming completion without errors during a hands-on activity.
3. Access and interpret grades and instructor feedback by locating graded items and identifying feedback comments in a simulated course scenario.
4. Use D2L communication tools (email, discussions) to send messages and participate in course interactions according to provided guidelines
5. Customize notification settings to manage course alerts (email/text) based on personal preferences as demonstrated in a live platform task.



**THE
DEVELOPMENT
PHASE**



IMPLEMENTATION PHASE

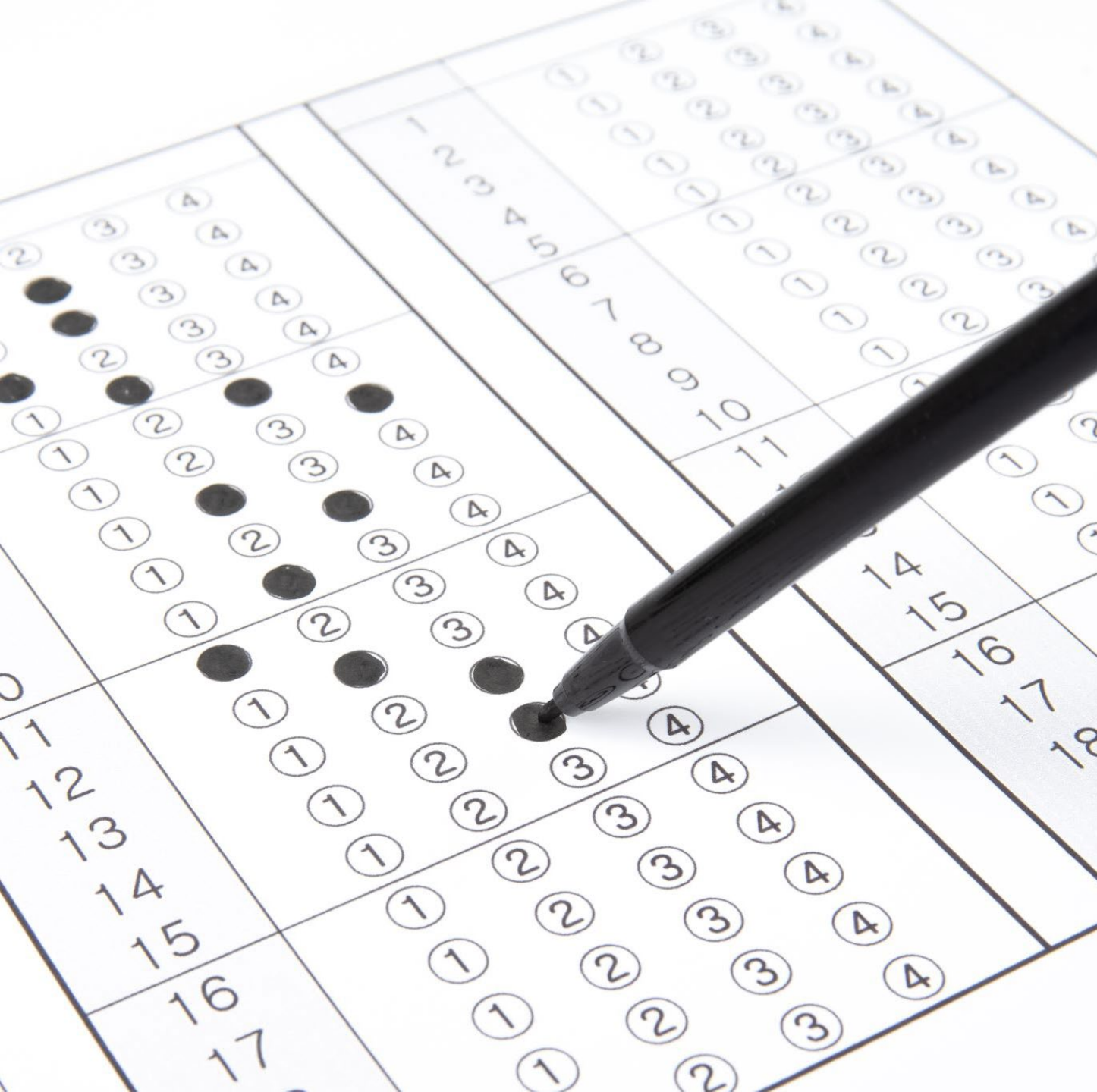




**D2L use
instructional video**

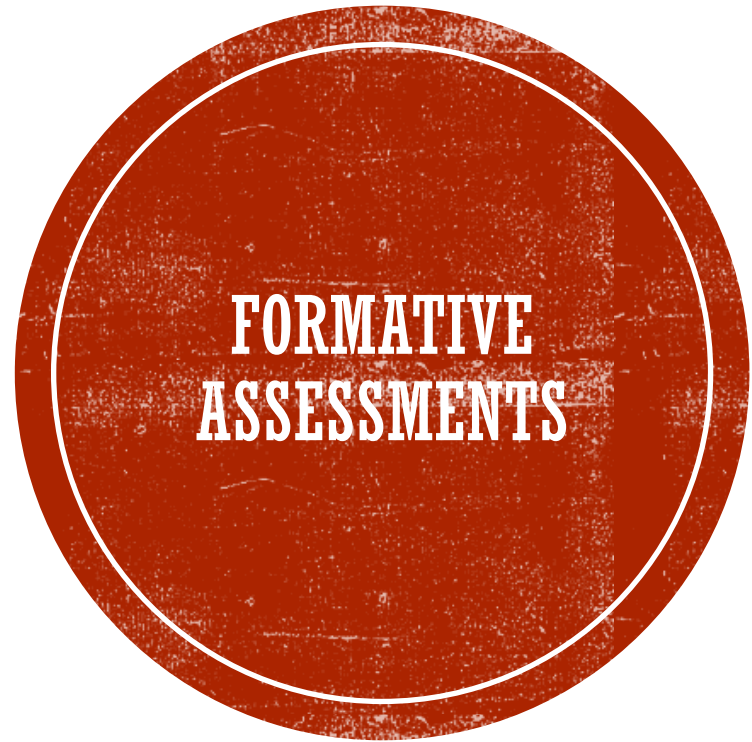
Recap videos

**Visual
slides/screenshots**



EVALUATION PHASE





Short quizzes

Hands-on tasks

• Q&A

SUMMATIVE ASSESSMENTS



Student Feedback



Quiz



Review
formative data



Follow-up
email



STAKEHOLDER FEEDBACK

Student
surveys

Faculty
feedback
form

Tech staff
recurring
issues

